

INSTRUMENT APPROACH CHART - ICAO

KEMBLE

RNP

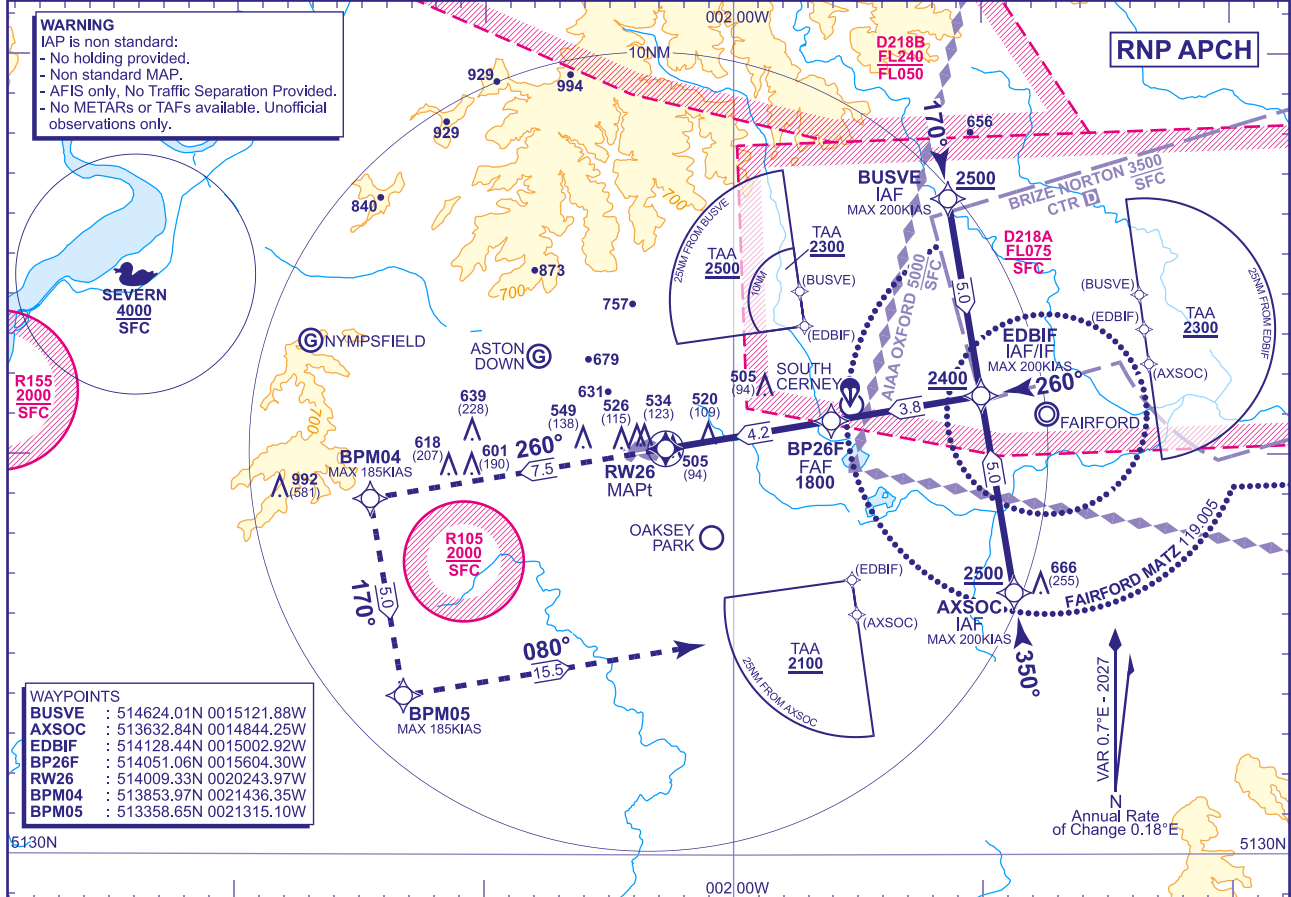
RWY 26

(ACFT CAT A,B,C,D)

<div>25</div> <div>MSA 25NM ARP</div>	AFIS 118.430	KEMBLE INFORMATION	AD ELEVATION 436	MIN TEMP -10C TRANSITION ALTITUDE 3000
	LARS 124.280	BRIZE RADAR	THR ELEVATION 411	
	ZONE 119.005	BRIZE ZONE	OBSTACLE ELEVATION 992 AMSL (581) (ABOVE THR)	
			BEARINGS ARE MAGNETIC	

WARNING

IAP is non standard:
- No holding provided.
- Non standard MAP.
- AFIS only, No Traffic Separation Provided.
- No METARs or TAFs available. Unofficial observations only.



RECOMMENDED PROFILE VNAV Vertical Path Angle 3.0° (LNAV 5.24%), 319FT/NM

NM to RW26	4	3	2
ALT(HGT)	1730(1319)	1420(1009)	1100(689)

TCH 50

MAPt (LNAV): RW26

Continuous climb to 2500. Initially climb straight ahead to BPM04, then left turn to BPM05, then left turn to AXSOC.

BPM04

RW26

BP26F
1800(1389)EDBIF
2400(1989)

1000(589)

Aircraft Category		A	B	C	D	Rate of descent	G/S KT				
OCA (OCH)	LNAV/VNAV	920(509)	920(509)	1020(609)	1120(709)		FT/MIN				
	LNAV	920(509)	920(509)	1020(609)	1120(709)		850	740	640	530	420
VM(C)OCA (OCH AAL)		Total Area	950(514)	980(544)	1160(724)	1270(834)					

- NOTE**
- 1 IAP only available during notified ATZ HRS and AFIS available.
 - 2 IAP is in Class D and G airspace. Pilots are required to co-ordinate their approach with 124.280 Brize Radar or via Kemble FIS.
 - 3 Pilots are advised of gliding activity in the vicinity of Kemble.
 - 4 Pilots are advised of IAPs to RWY 07/25 at RAF Brize Norton.
 - 5 RAF Fairford notified operational by NOTAM.
 - 6 Use of IAP is strictly PPR from the aerodrome operator.
 - 7 RAF Brize Norton frequencies are intended for transit and/or a LARS service only and do not provide approach to Cotswold airport as described in the pilot brief.

CHANGE (4/26): MAG INFO REVISED. MAG HEADINGS.

AERO INFO DATE 29 JAN 26

AD 2-EGBP-8-2